



Lebanon Community School Corporation School Facility Improvements

School Board Meeting

November 15, 2022

CONTRIBUTORS



CREATED FOR



CONTENT

SCHEMATIC DESIGN

- 1 Program Validation
- 2 Functional Criteria; Learning Environments
- 3 Elementary School Improvements

School Facility
Improvements

School Board
Meeting

November 15, 2022

CREATED FOR

Lebanon
Community
School
Corporation



GIBRALTAR
DESIGN

MEYER
NAJEM



LEBANON
COMMUNITY SCHOOL CORPORATION



Most Importantly:
A school facility will
provide students an
enriching environment
for enhanced learning,
opportunity, and
achievement.



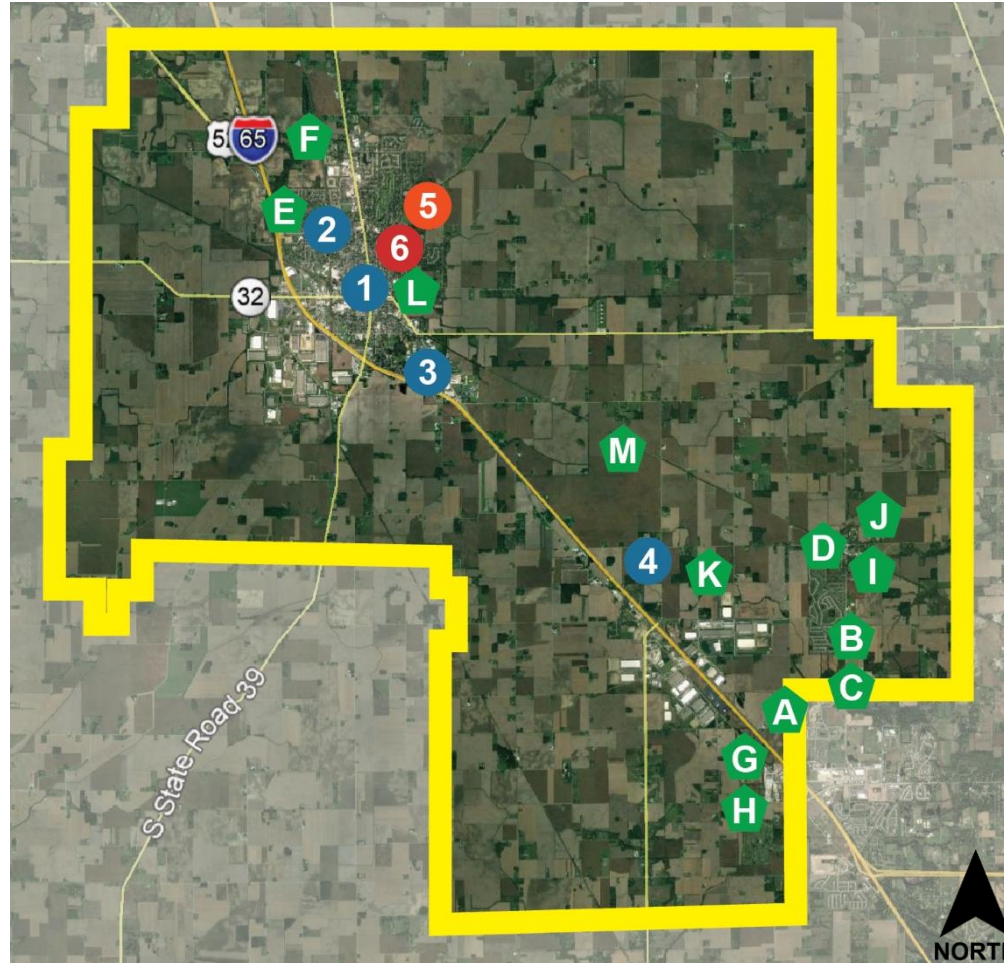
GIBALTAR
DESIGN



DISTRICT-WIDE REVIEW

Lebanon School Corporation & Platted Neighborhoods

Mark	Neighborhood
A	Edmonds Creek
B	The Heritage
C	Harvest Park
D	Trailside
E	Riley Ridge
F	Sunbrook
G	Cardinal Pointe (Pulte)
H	Cardinal Pointe (Lennar)
I	Bridle Oaks
J	Jackson Run
K	Peabody
L	Cedar Ridge
M	Waterford



1	Central Elementary School
2	Harney Elementary School
3	Stokes Elementary School
4	Perry-Worth Elementary School
5	Lebanon Middle School
6	Lebanon High School

School Facility
Improvements

School Board
Meeting

November 15, 2022

CREATED FOR

Lebanon
Community
School
Corporation



GIBALTAR
DESIGN



SITE AND BUILDING FACT SHEET

Student Population

Facility	Current Grades Offered	Total Square Feet	Square Feet Per Student	Original-Build Date & Adds/Renos	Student Population 2019-20	Student Population 2020-21
Central ES	K-5	52,700	145	Year Built=1951 A/R: 1966, 1988	361	347
Harney ES	PK-5	77,590	174	Year Built=1957 A/R: 1962, 1988, 2000	444	410
Hattie B Stokes ES	PK-5	91,775	224	Year Built=2003	408	385
Perry Worth ES	PK-5	78,000	194	Year Built=1965 A/R: 1969, 1994	401	355
ES TOTALS:		300,065	200		1,614	1,497
Lebanon MS	6-8	226,700	292	Year Built=1975 A/R: 1994	777	
MS TOTALS:		226,700	292		777	
Lebanon HS	9-12	381,000	392	Year Built=1957 A/R: 1964, 1966, 1971, 1972, 1989, 2001, 2006, 2011	972	
HS TOTALS:		381,000	392		972	
DISTRICT TOTALS:		930,900	884		3,363	

School Facility
Improvements

School Board
Meeting

November 15, 2022

CREATED FOR

Lebanon
Community
School
Corporation



GIBRALTAR
DESIGN



PROGRAM VALIDATION

Applied to Each School



School Board Meeting: 10/18/2022

LEBANON ELEMENTARY PROGRAMMING

General Classrooms

Type of Space	Quantity
Kindergarten Classrooms w/ Private Restrooms	5
Classrooms in Each Grade Level [1 – 5]	20
Strategically Placed Flex Classrooms	2

Special Education Classrooms

Type of Space	Quantity
LifeSkills District Programming at Stokes Elementary	2
ED District Programming at New Elementary	2
Functional Academic District Programming at Hamey Elementary	1
Preschool Programming at Perry-Worth Elementary	2
Developmental PreK and PreK at Current Central Elementary	TBD
School Based Resource SPED	2 per building

Student Support

Type of Space	Quantity
Small Group Instruction	3
Student Support Flex Spaces	3
Speech	1
Main Office: Principal, Asst. Principal, 2 FLEX Offices, Conference Room, and Clinic	1
Calming Space Near Front Office	1
SRO Office Near Main Entrance	1

Exploratory Spaces

Type of Space	Quantity
STEM	1
Media Center	1
Gym	1
Music	1
Art	1



School Facility
Improvements

School Board
Meeting

November 15, 2022

CREATED FOR

Lebanon
Community
School
Corporation

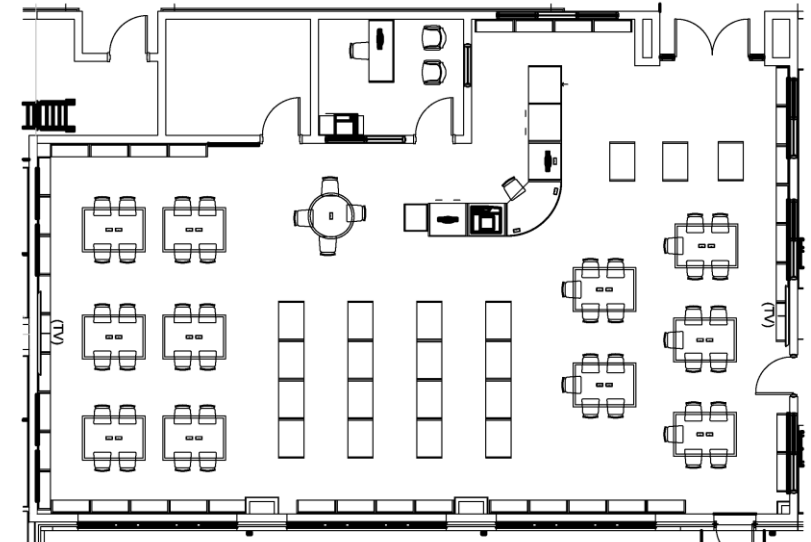
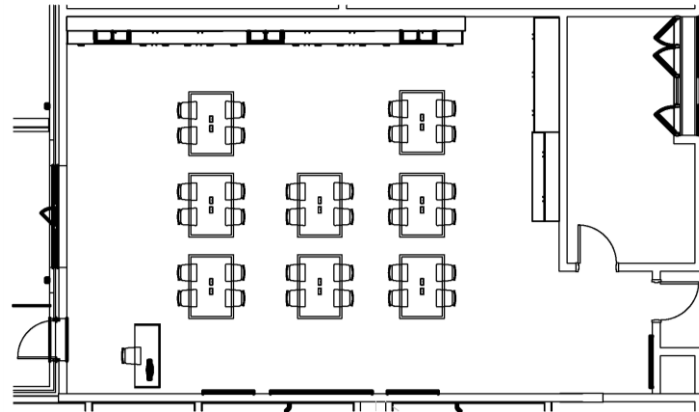
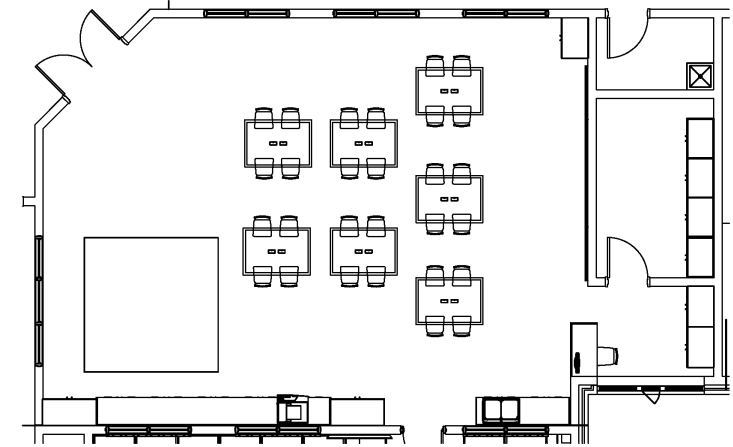
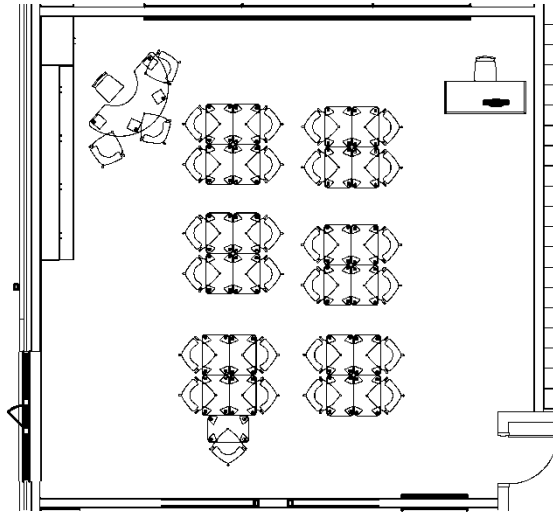


GIBRALTAR
DESIGN



ELEMENTARY FUNCTIONAL CRITERIA

Applied to Each School; All Learning Spaces



School Facility
Improvements

**School Board
Meeting**

November 15, 2022

CREATED FOR

*Lebanon
Community
School
Corporation*

HARNEY ELEMENTARY SCHOOL



GIBRALTAR
DESIGN



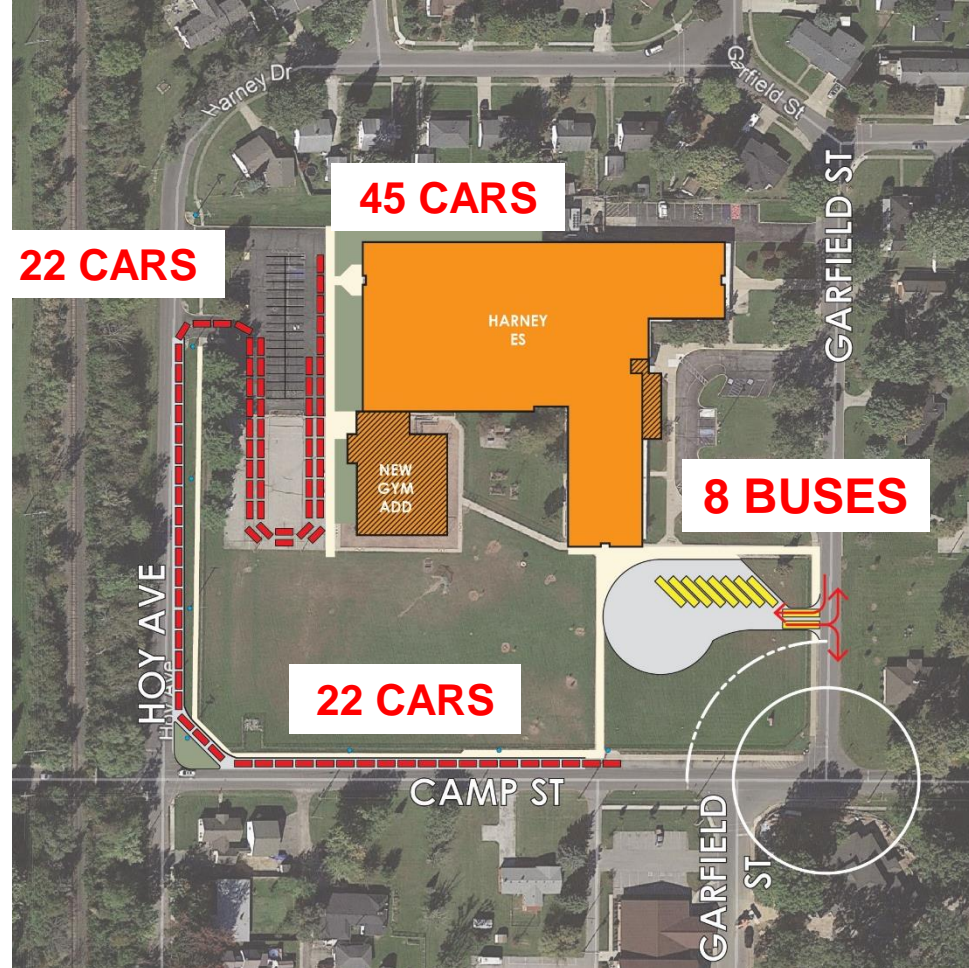


GIBALTAR
DESIGN



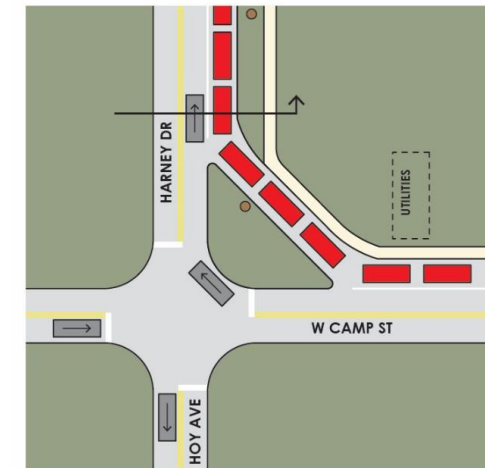
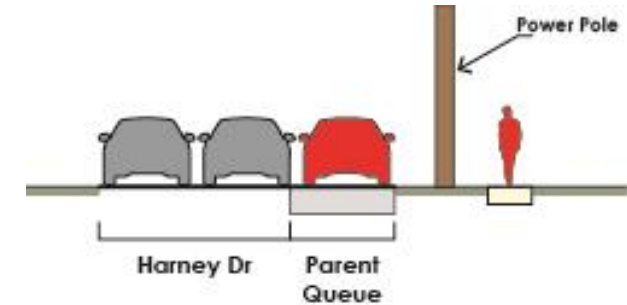
HARNEY ELEMENTARY SCHOOL

Car Queue; Street Parking Lanes



Considerations

- ❖ Parent Pickup / Drop-Off
 - ♦ ±88 Cars
- ❖ Separate Bus Circulation



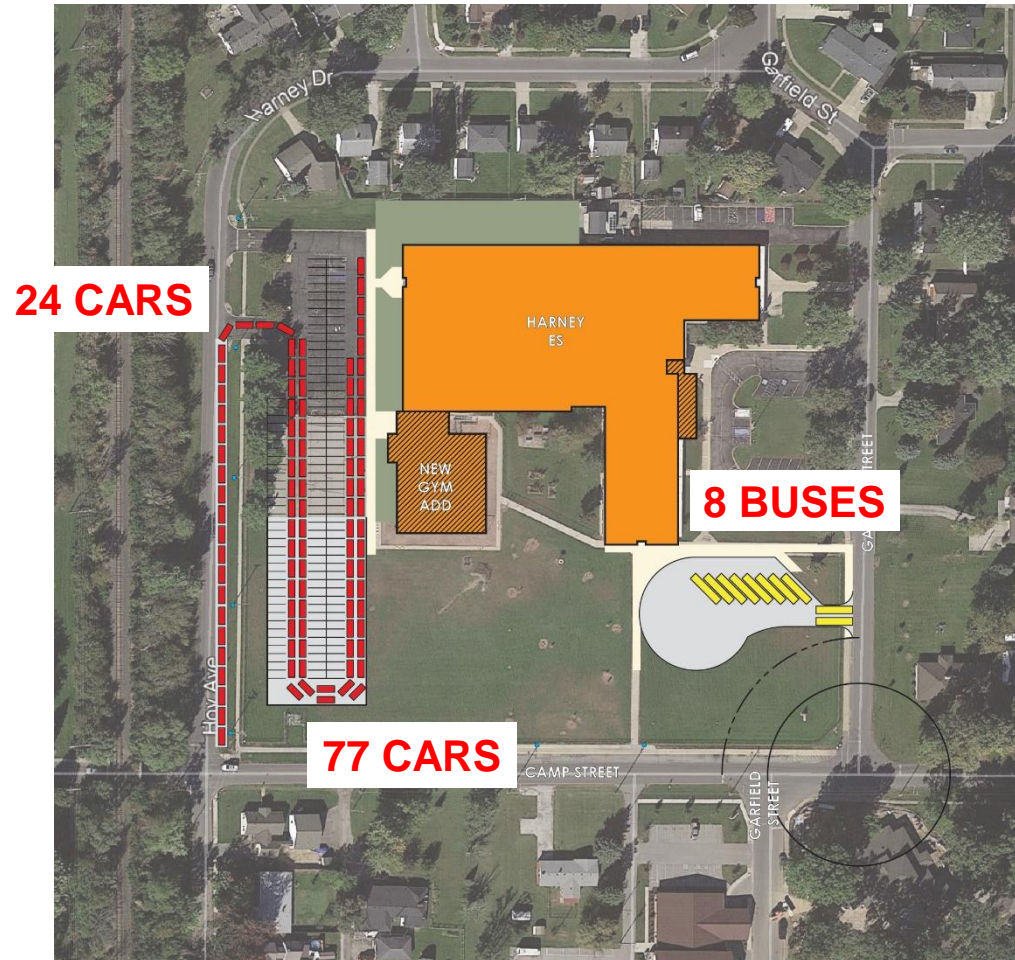


GIBALTAR
DESIGN



HARNEY ELEMENTARY SCHOOL

West Parking Lot Extension



Considerations

- ❖ Car Queue ± 100 can be achieved
- ❖ More Parking for Gym and School Events
- ❖ Eliminate the Camp Street car queue lane of scope

NOTE: Hard Surface and Soft Surface Play to be determined

School Facility
Improvements

School Board
Meeting

November 15, 2022

CREATED FOR

Lebanon
Community
School
Corporation

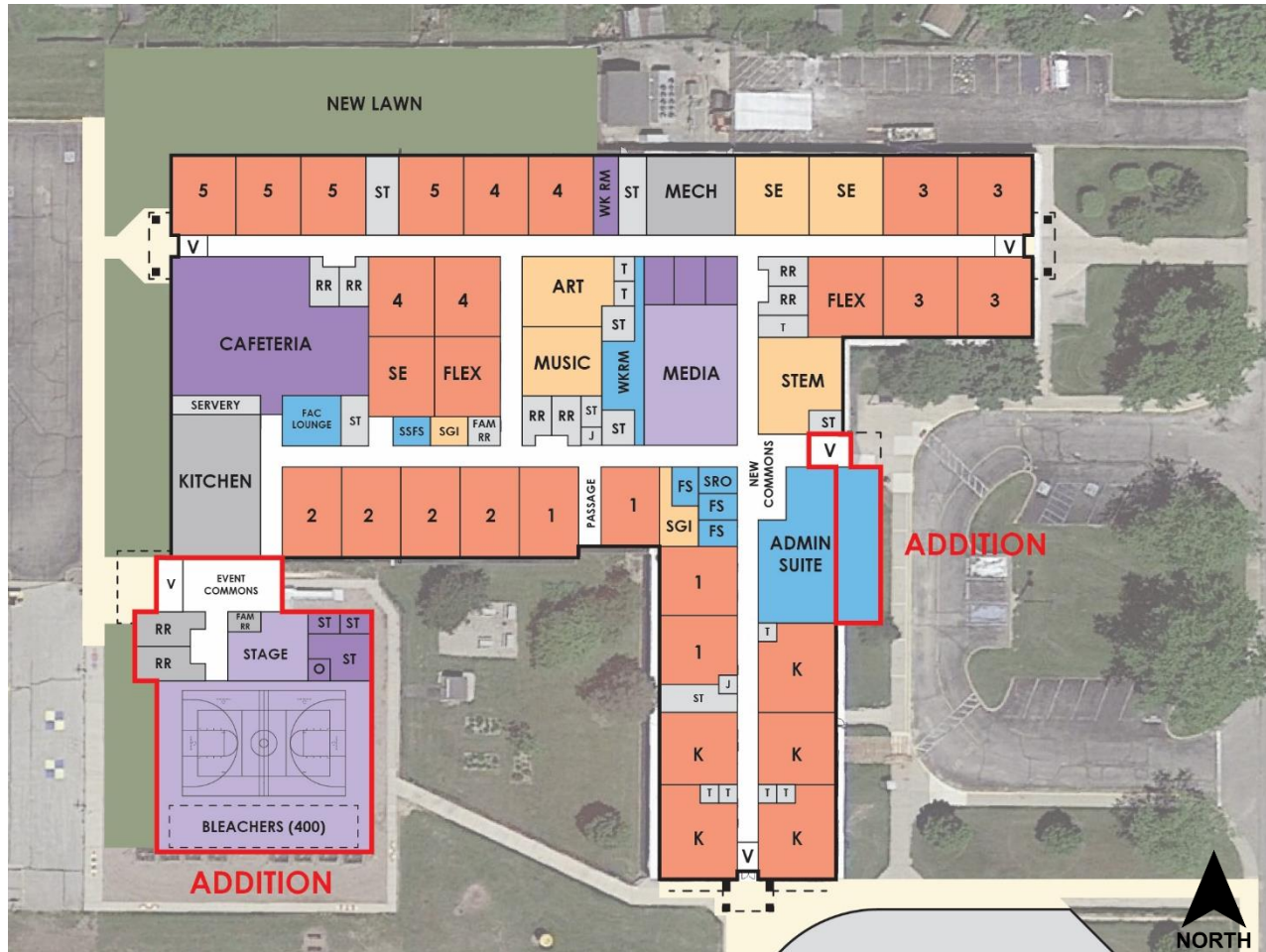


GIBRALTAR
DESIGN



HARNEY ELEMENTARY SCHOOL

Floor Plan



Considerations

- ❖ 5 KG Classrooms
- ❖ 4 of each Grade 1-5
- ❖ 2 Flex Classrooms for Future Growth
- ❖ 2 Resource SPED CR
- ❖ 1 Instructional Resource CR
- ❖ Additional Small Group Instruction and Student Support Flex Spaces
- ❖ Expanded Main Office
- ❖ Expanded Cafeteria
- ❖ New Gymnasium and Stage
- ❖ New STEM Space
- ❖ Calming Room Near Main Office
- ❖ SRO Office Near Main Office

School Facility
Improvements

School Board
Meeting

November 15, 2022

CREATED FOR

Lebanon
Community
School
Corporation

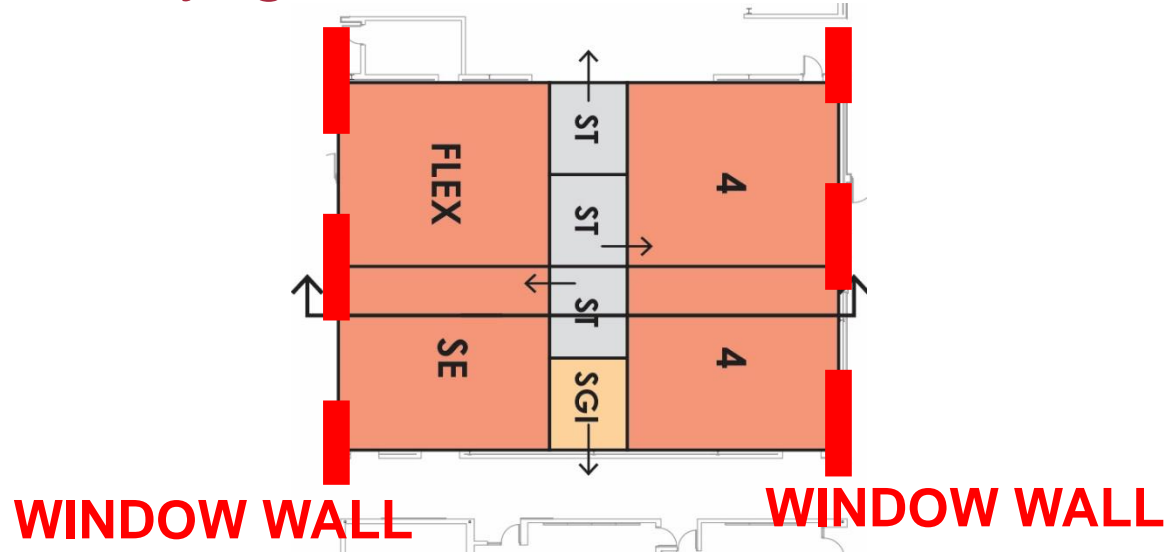


GIBRALTAR
DESIGN



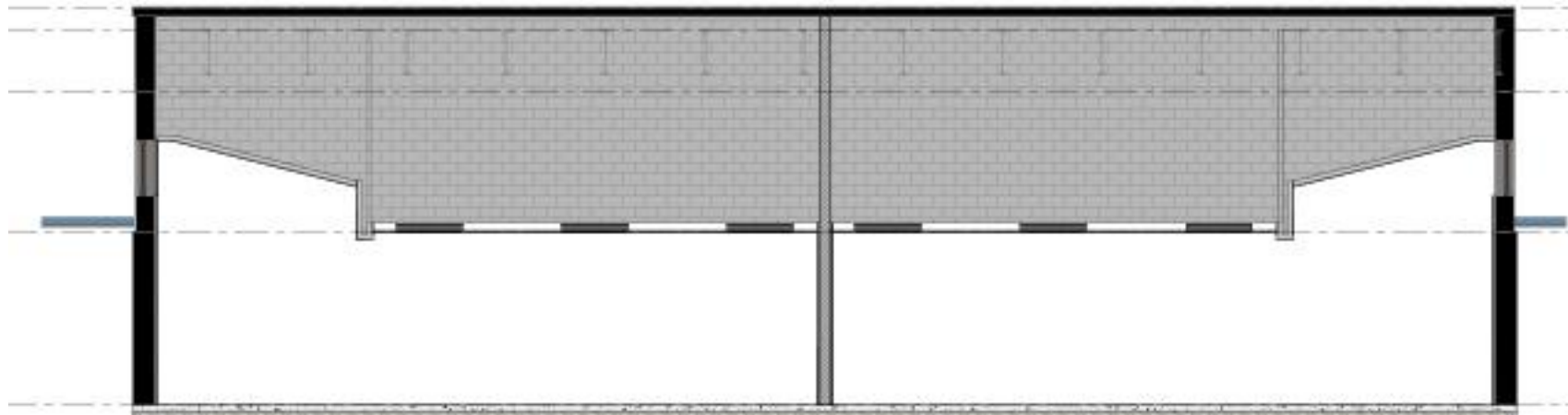
HARNEY ELEMENTARY SCHOOL

Daylight; Additional 4 Classrooms



Considerations

- ❖ Additional Classrooms needed for School Capacity goals
- ❖ Daylight provided to rooms
- ❖ Effective existing square foot management/use



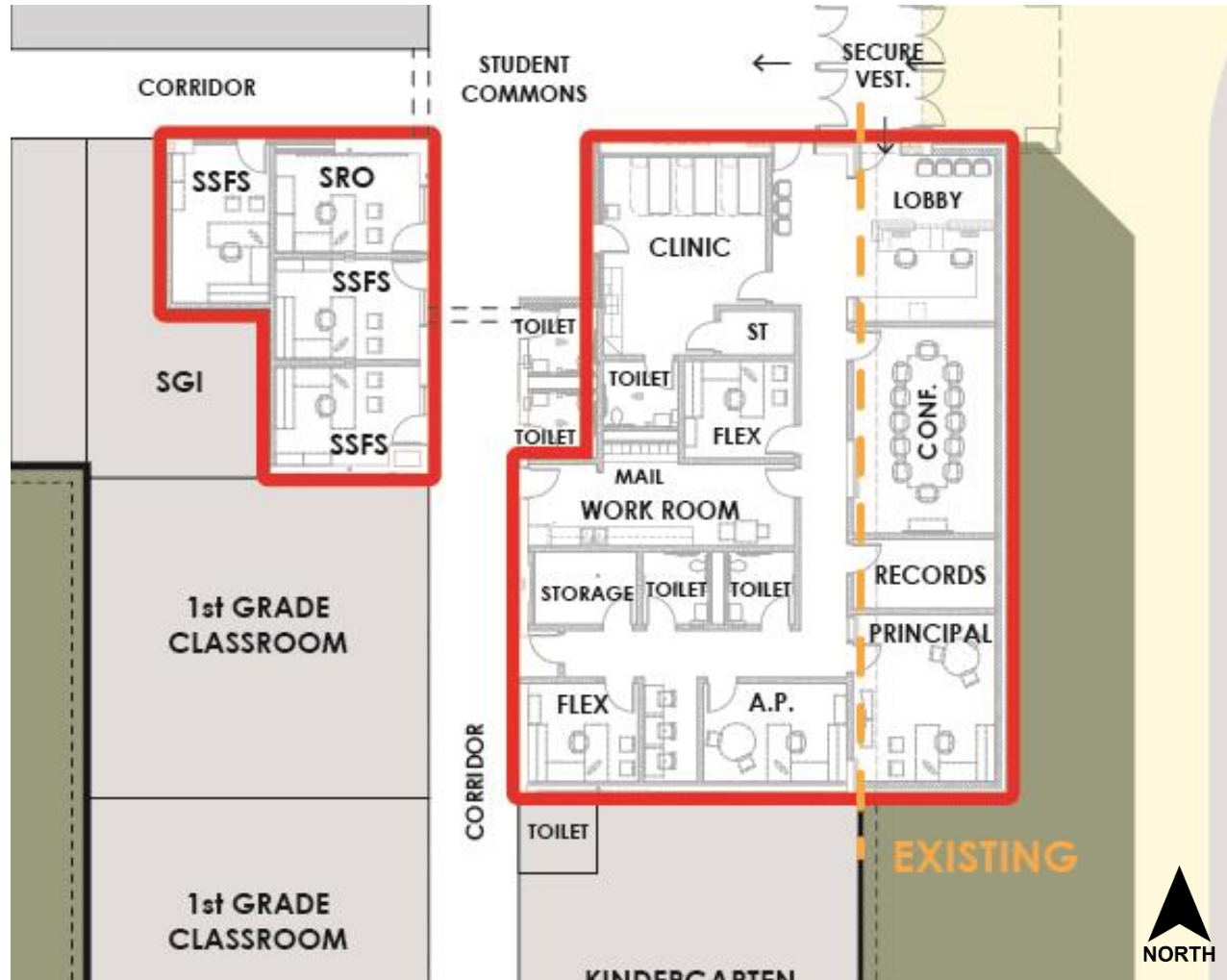


GIBRALTAR
DESIGN



HARNEY ELEMENTARY SCHOOL

Main Office Update



Considerations

- ❖ Total ± 4,000 SF
- ❖ Added Programming for additional student support
- ❖ Flex Offices for Future Use
- ❖ Strategically located conference room

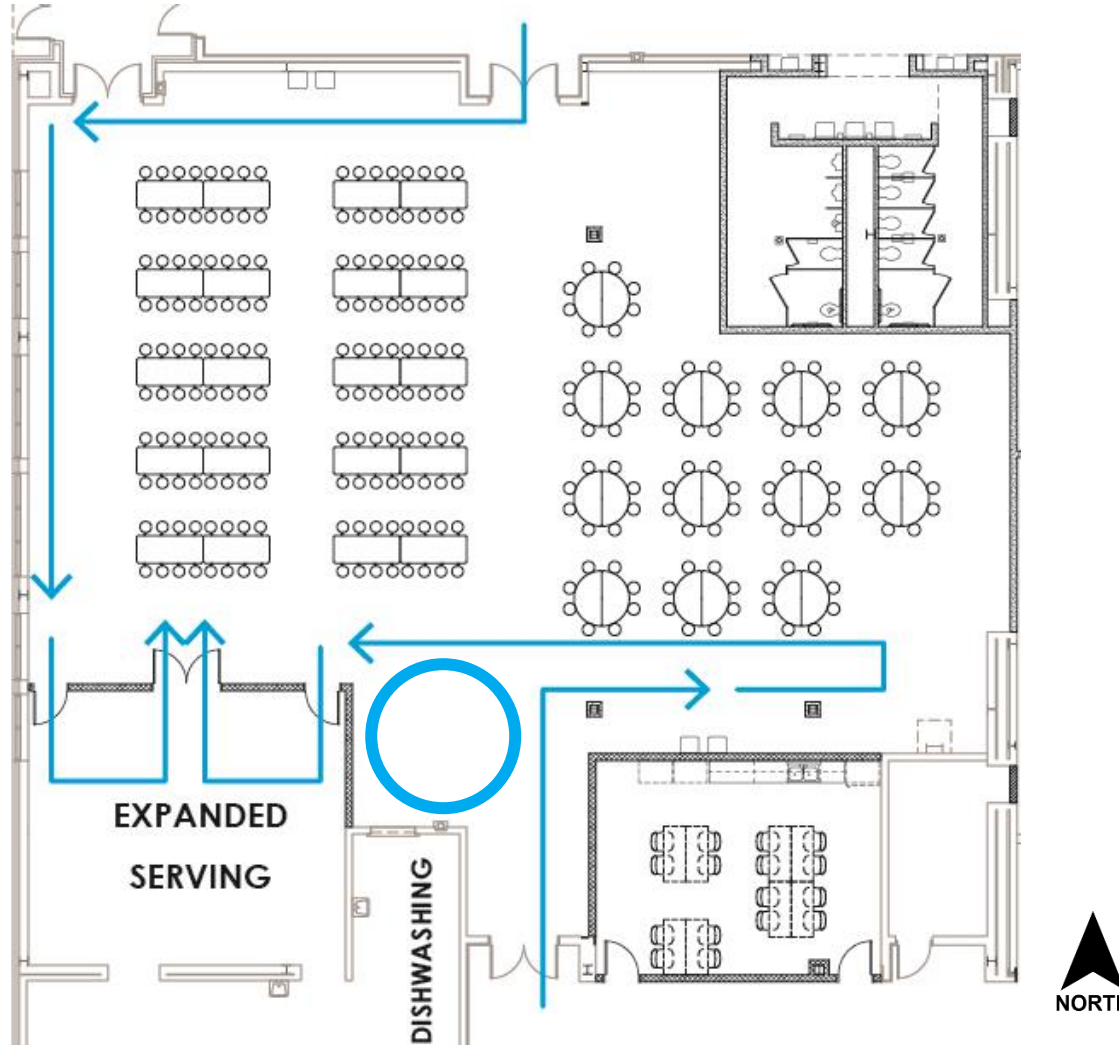


GIBALTAR
DESIGN



HARNEY ELEMENTARY SCHOOL

Cafeteria Expansion



Considerations

- ❖ Seating Capacity Check
 - ♦ Round Seating: 248
 - ♦ Mixed Seating: 256
 - ♦ Rectangular Seating: 304
- ❖ Utilize original existing Stage for additional needed seating capacity
- ❖ Increase/Add windows for additional daylight benefit



School Facility
Improvements

School Board
Meeting

November 15, 2022

CREATED FOR

Lebanon
Community
School
Corporation

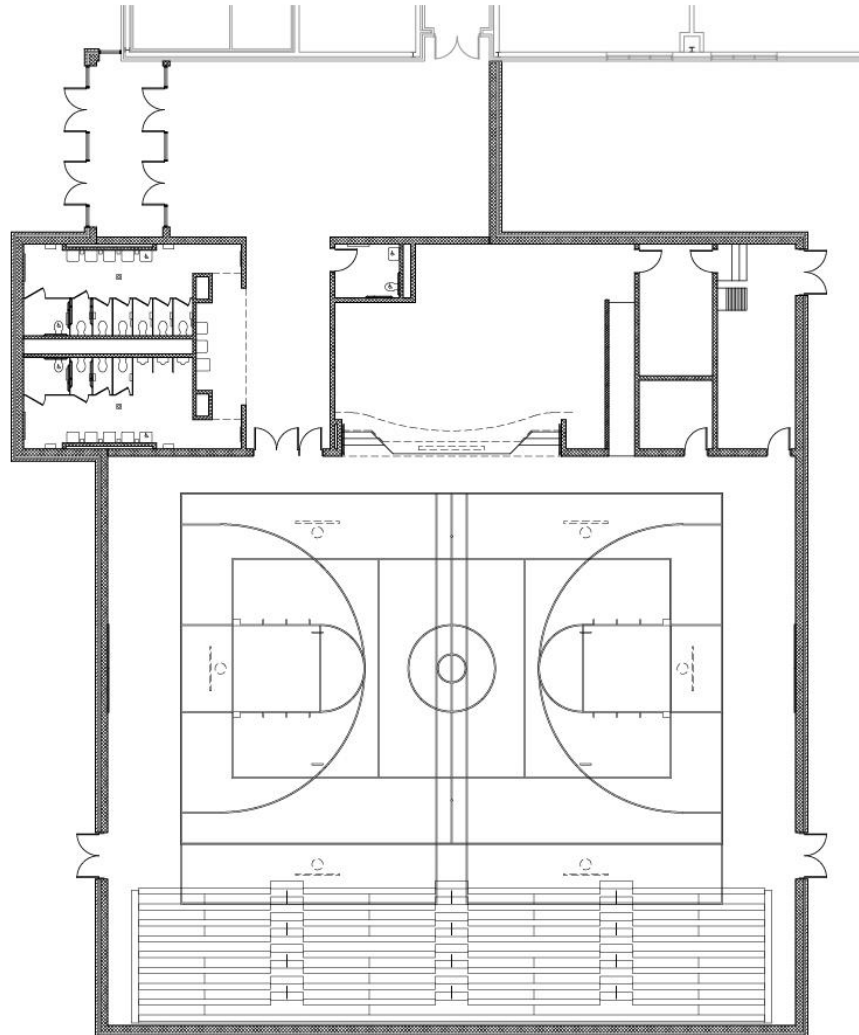


GIBRALTAR
DESIGN



HARNEY ELEMENTARY SCHOOL

New Gymnasium



Considerations

- ❖ School Assembly accommodated with New Gym and Stage
- ❖ Community use
- ❖ Option to secure for Evening/Community Use
- ❖ Seating Capacity
 - ◆ Bleachers: 400
 - ◆ Floor: 350
 - ◆ Total: 750
- ❖ Court Size 74' x 48'

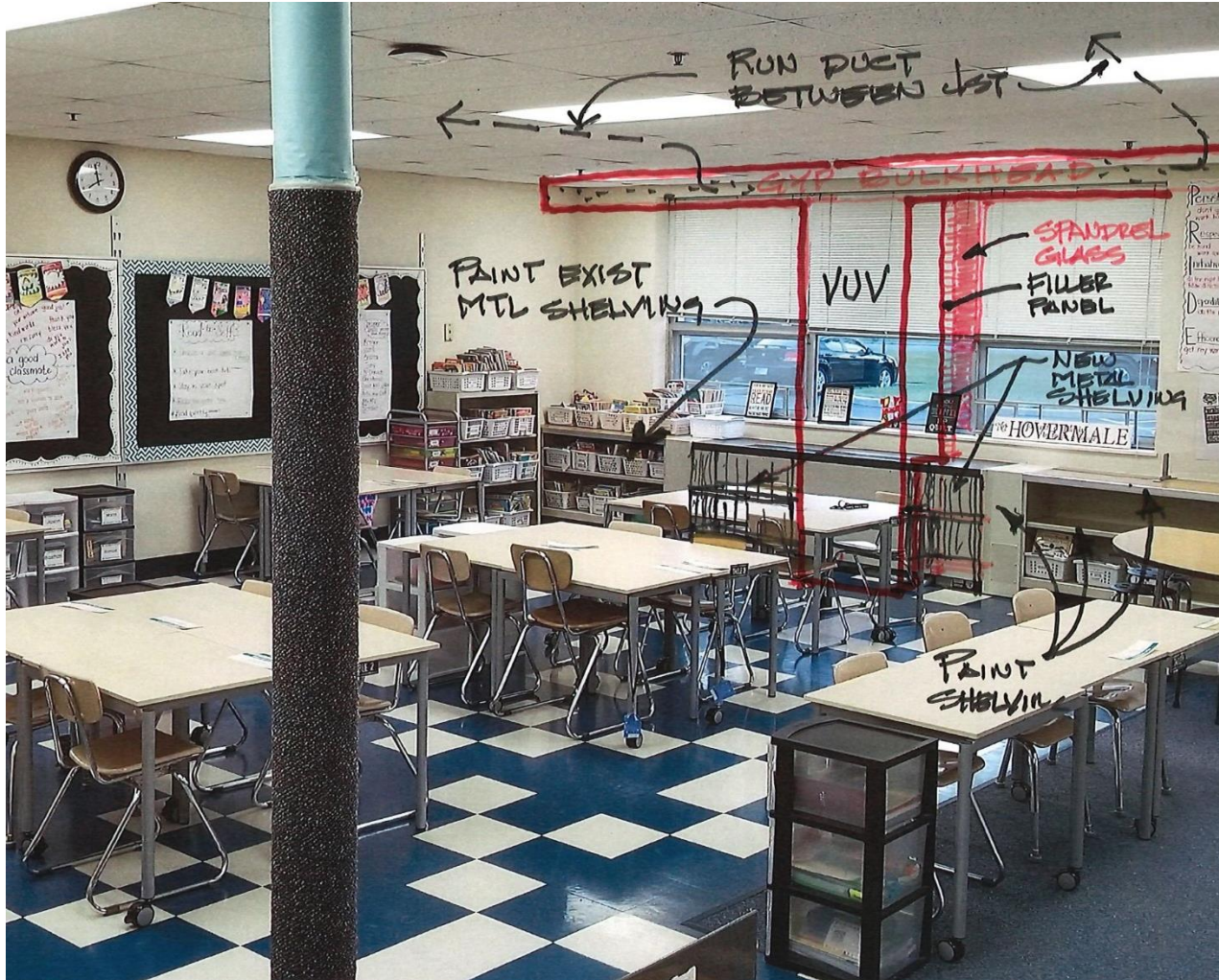


GIBRALTAR
DESIGN



HVAC; FUNCTIONAL ILLUSTRATION

Existing Classroom Retrofit



Considerations

- ❖ Overhead Supply Air
- ❖ Return Air low within room
- ❖ Outdoor Air supply; fresh
- ❖ System retrofit requires less above ceiling space with duct between joists
- ❖ Individual Room Control for HVAC temperature
- ❖ Effective Retrofit installation with low and difficult clearances
- ❖ Avoid Rooftop Units with maintenance and more compressors & parts in tougher locations

School Facility
Improvements

School Board
Meeting

November 15, 2022

CREATED FOR

Lebanon
Community
School
Corporation



GIBRALTAR
DESIGN



INSTALL EXAMPLE

Kokomo Maple Crest Middle School



BEFORE



AFTER

School Facility
Improvements

School Board
Meeting

November 15, 2022

CREATED FOR

Lebanon
Community
School
Corporation

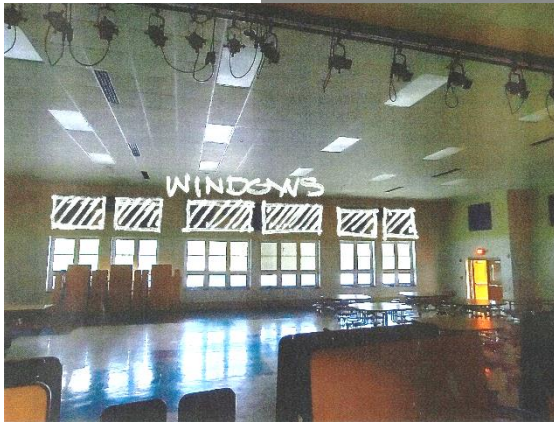


GIBALTAR
DESIGN

MEYER
NAJEM

HARNEY ELEMENTARY SCHOOL

Cafeteria with New Gym



School Facility
Improvements

School Board
Meeting

November 15, 2022

CREATED FOR

Lebanon
Community
School
Corporation



GIBRALTAR
DESIGN



HARNEY ELEMENTARY SCHOOL

Gymnasium Addition



School Facility
Improvements

School Board
Meeting

November 15, 2022

CREATED FOR

Lebanon
Community
School
Corporation



GIBRALTAR
DESIGN



HARNEY MAIN OFFICE ES

Main Entry Expansion



School Facility
Improvements

School Board
Meeting

November 15, 2022

CREATED FOR

Lebanon
Community
School
Corporation



GIBRALTAR
DESIGN



HARNEY ELEMENTARY SCHOOL

View from Garfield/Camp



School Facility
Improvements

**School Board
Meeting**

November 15, 2022

CREATED FOR

*Lebanon
Community
School
Corporation*

PERRY-WORTH ELEMENTARY SCHOOL

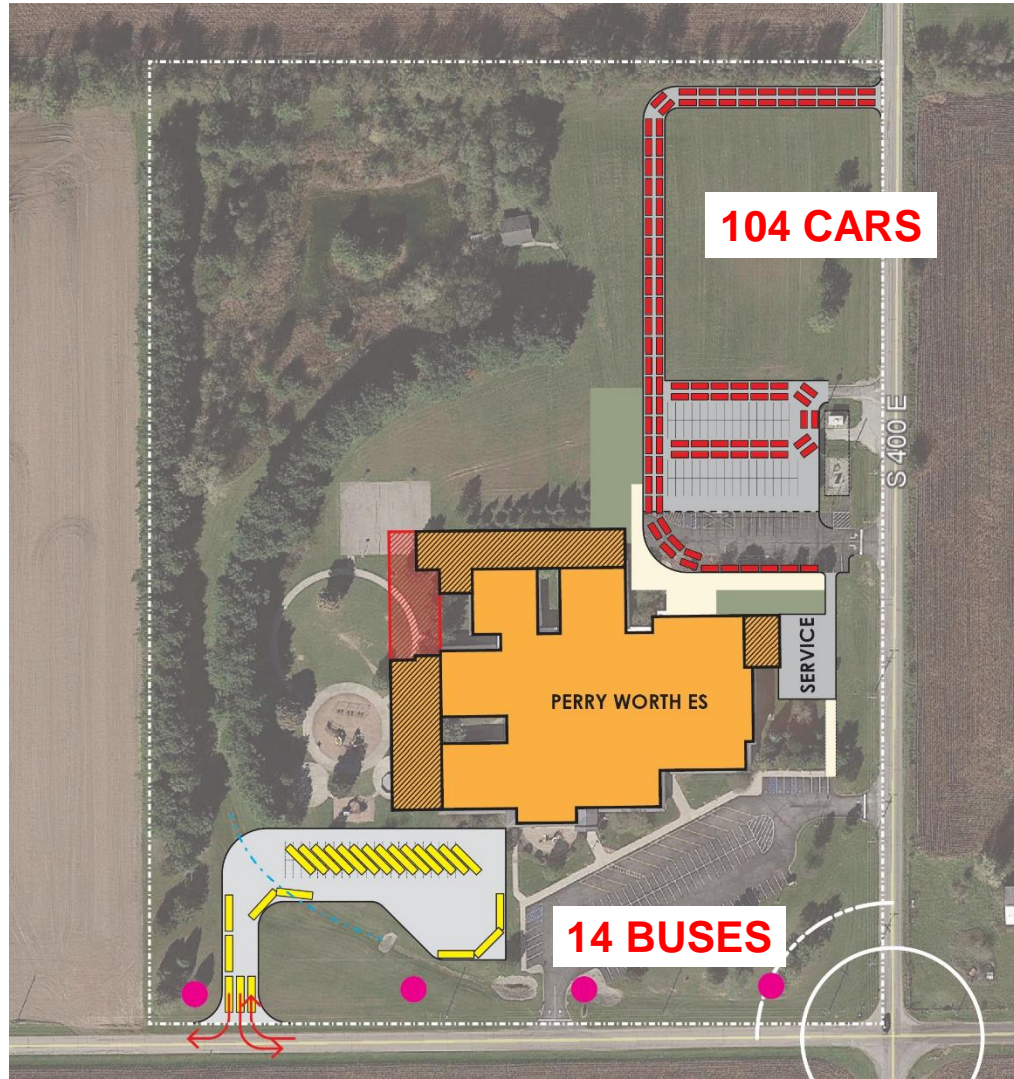


GIBRALTAR
DESIGN



PERRY-WORTH ELEMENTARY SCHOOL

Site Plan Diagram



Considerations

- ❖ Parent Pickup / Drop-Off
 - ♦ ± 104 Cars
- ❖ Master Plan for 14 Buses if needed



School Facility
Improvements

School Board
Meeting

November 15, 2022

CREATED FOR

Lebanon
Community
School
Corporation



GIBALTAR
DESIGN



School Facility
Improvements

School Board
Meeting

November 15, 2022

CREATED FOR

Lebanon
Community
School
Corporation

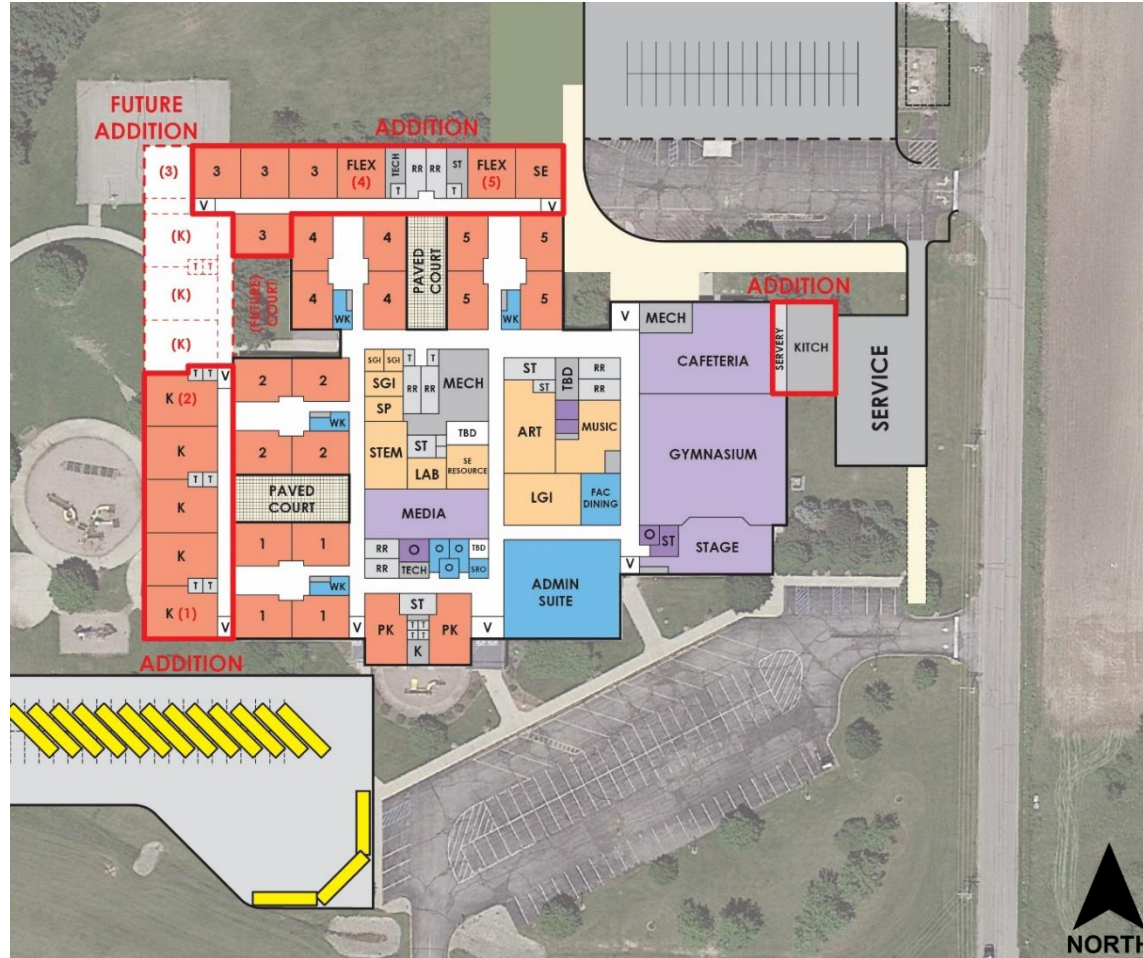


GIBALTAR
DESIGN



PERRY-WORTH ELEMENTARY SCHOOL

Floor Plan



Considerations

- ❖ 2 PK Classroom
- ❖ 5 KG Classroom
- ❖ 4 CR at each Grade Level (1-5)
- ❖ 2 Flex Classroom
- ❖ 2 Resource SPED Classrooms
- ❖ Additional Small Group Instructional and Student Support Flex Spaces
- ❖ Main Office Renovation for Student Support Programming
- ❖ New Kitchen and expanded cafeteria
- ❖ Calming room near main office
- ❖ SRO office near Main Entrance

PERRY-WORTH ELEMENTARY SCHOOL

School Facility
Improvements

School Board
Meeting

November 15, 2022

CREATED FOR

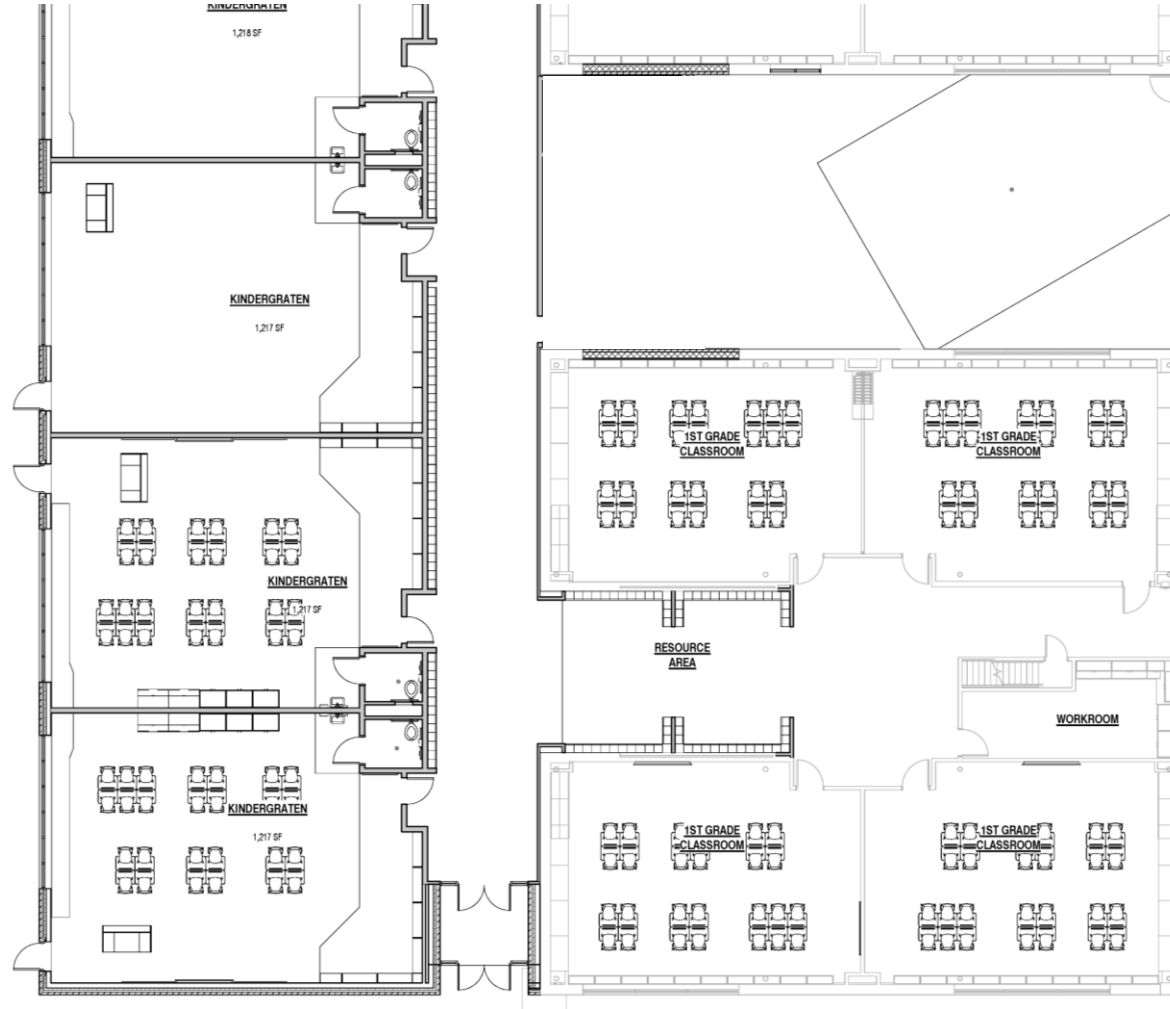
Lebanon
Community
School
Corporation



GIBALTAR
DESIGN



Corridor Connector to New Classrooms



- ❖ Locker Solution
- ❖ Removal of Loose Cubbies
- ❖ Replaced with Exterior CR Lockers



School Facility
Improvements

School Board
Meeting

November 15, 2022

CREATED FOR

Lebanon
Community
School
Corporation

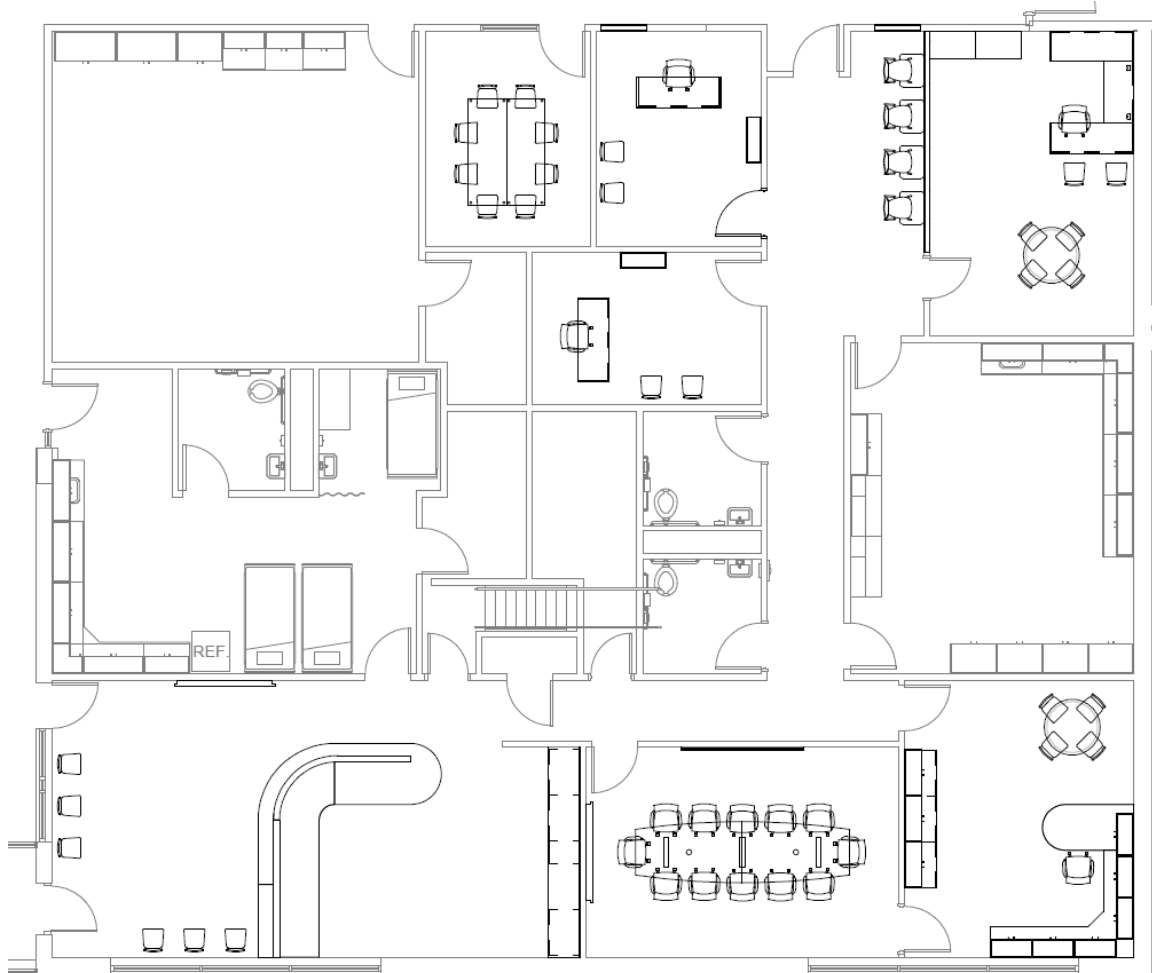


GIBRALTAR
DESIGN



PERRY-WORTH ELEMENTARY SCHOOL

Main Office Update



Considerations

- ❖ Total ± 4,800 SF
- ❖ Added Programming for additional student support
- ❖ Flex Offices for Future Use
- ❖ Strategically located conference room
- ❖ Expanded Reception Area
- ❖ New Right-Sized staff Lounge across from office

School Facility
Improvements

School Board
Meeting

November 15, 2022

CREATED FOR

Lebanon
Community
School
Corporation

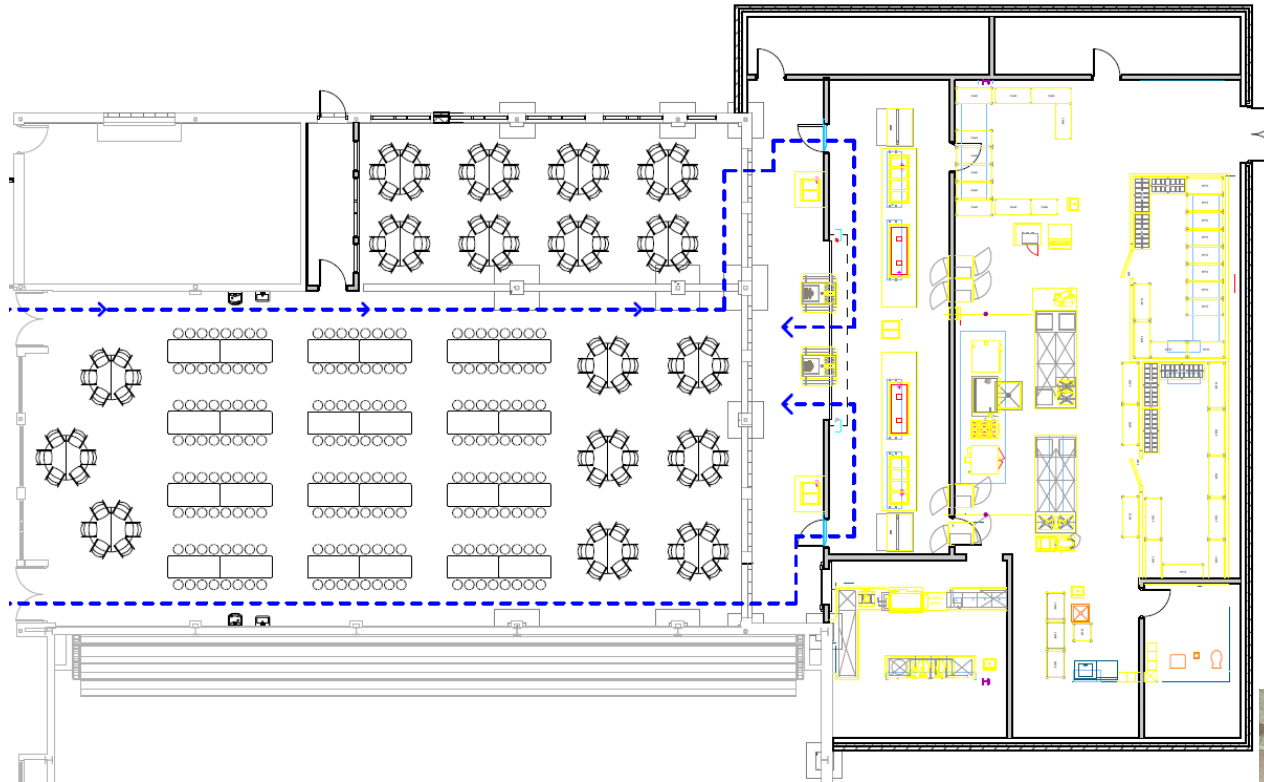


GIBRALTAR
DESIGN



PERRY-WORTH ELEMENTARY SCHOOL

Cafeteria Expansion



Considerations

- ❖ Round Seating: 252
- ❖ Mixed Seating: 294
- ❖ Rectangular Seating: 352
- ❖ 2 Serving Lines
- ❖ Added Capacity for 2 Grade Levels at once
- ❖ Master Planned for Future Growth



School Facility
Improvements

School Board
Meeting

November 15, 2022

CREATED FOR

Lebanon
Community
School
Corporation

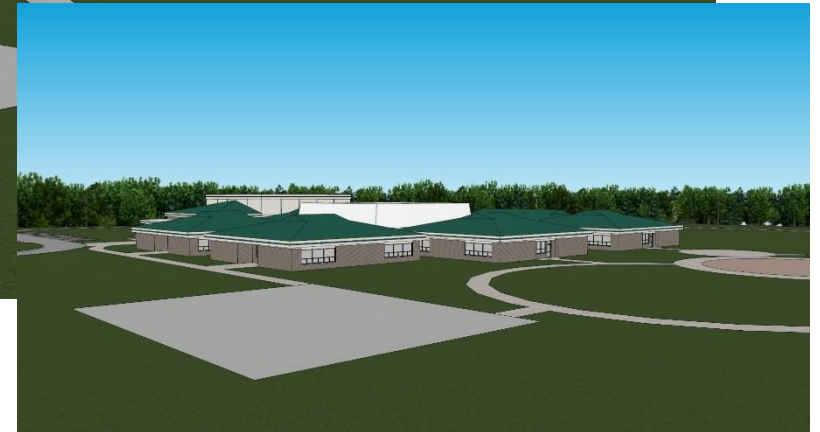
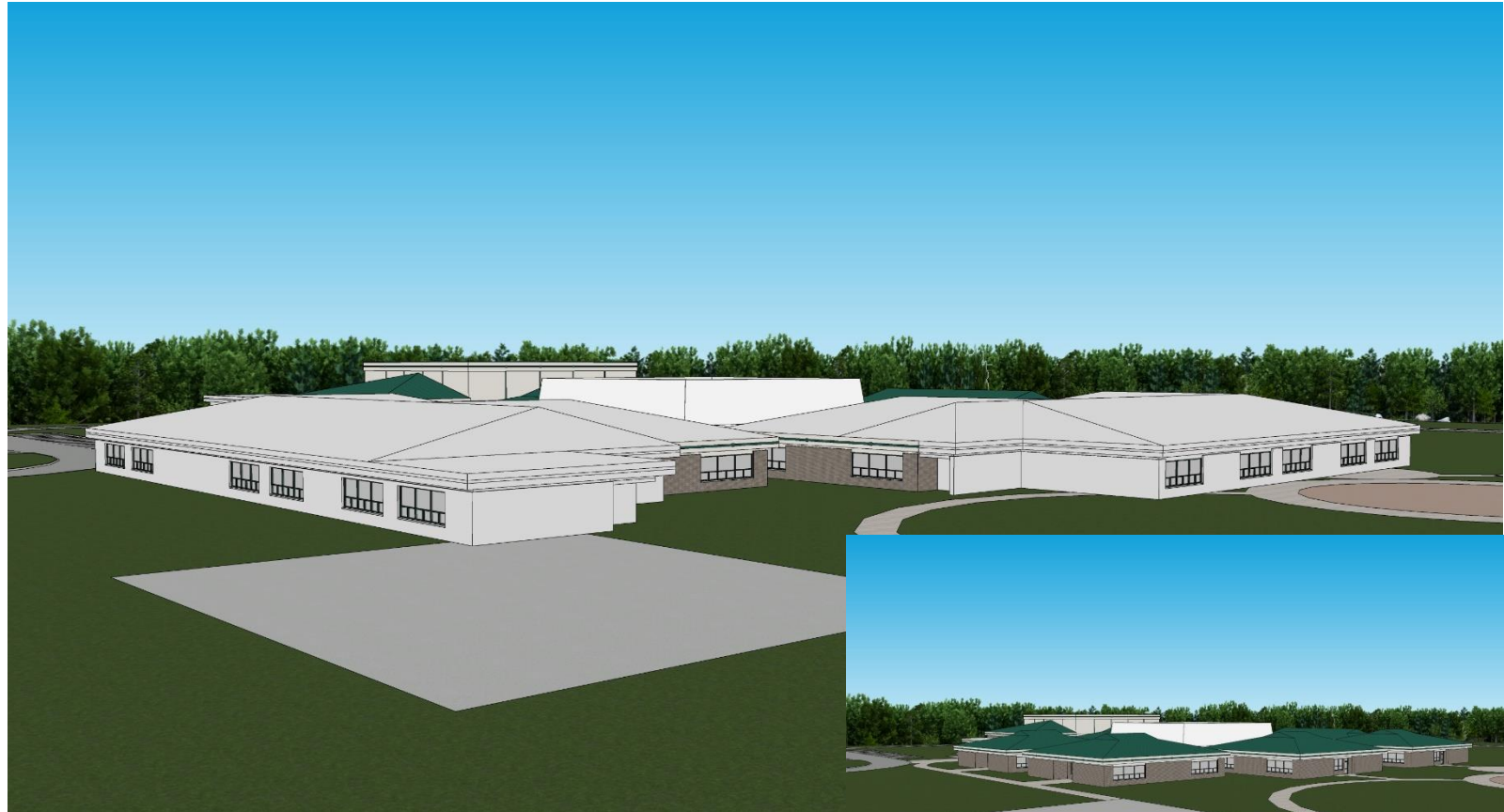


GIBRALTAR
DESIGN



PERRY-WORTH ELEMENTARY SCHOOL

Classroom Addition



School Facility
Improvements

School Board
Meeting

November 15, 2022

CREATED FOR

Lebanon
Community
School
Corporation

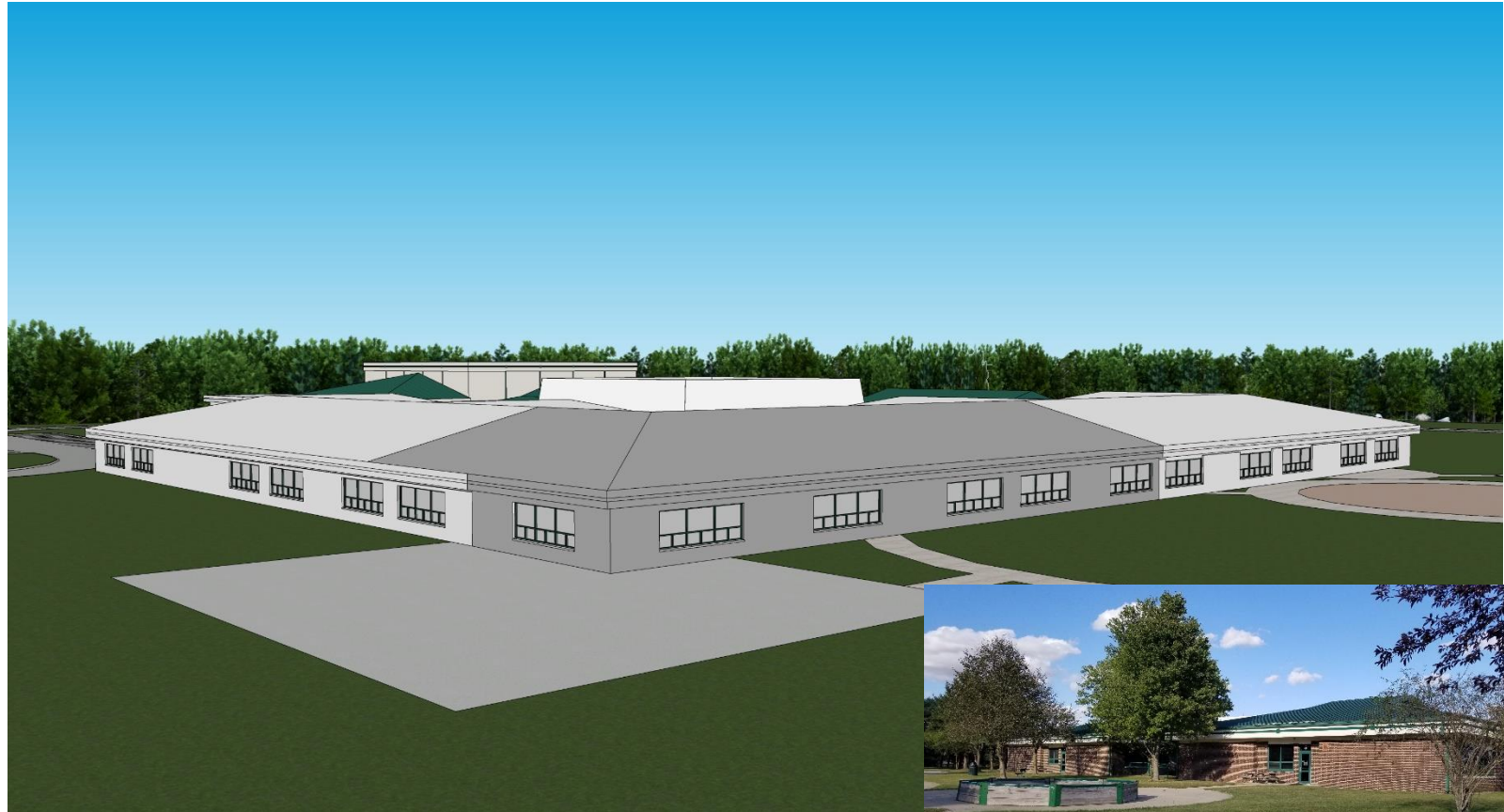


GIBRALTAR
DESIGN



PERRY-WORTH ELEMENTARY SCHOOL

Future Classroom Addition



School Facility
Improvements

**School Board
Meeting**

November 15, 2022

CREATED FOR

*Lebanon
Community
School
Corporation*



GIBRALTAR
DESIGN



NEW ELEMENTARY SCHOOL

Extend North Grant Street

School Facility Improvements

School Board Meeting

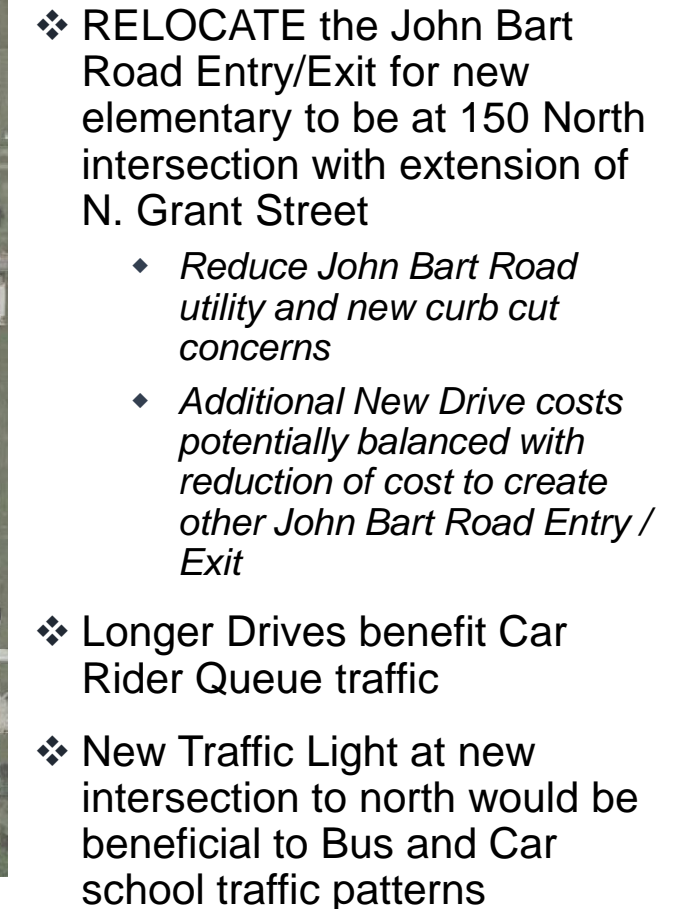
November 15, 2022

CREATED FOR

Lebanon
Community
School
Corporation



GIBRALTAR
DESIGN



School Facility
Improvements

School Board
Meeting

November 15, 2022

CREATED FOR

Lebanon
Community
School
Corporation



GIBRALTAR
DESIGN

MEYER
NAJEM

NEW ELEMENTARY SCHOOL

Building Concept



Considerations

- ❖ 5 KG Classrooms
- ❖ 4 CR in each Grade Level (1-5)
- ❖ 2 Flex Classrooms
- ❖ 2 Resource SPED Classrooms
- ❖ 2 ED Classrooms
- ❖ Additional Small Group Instruction and Student Support Flex Spaces

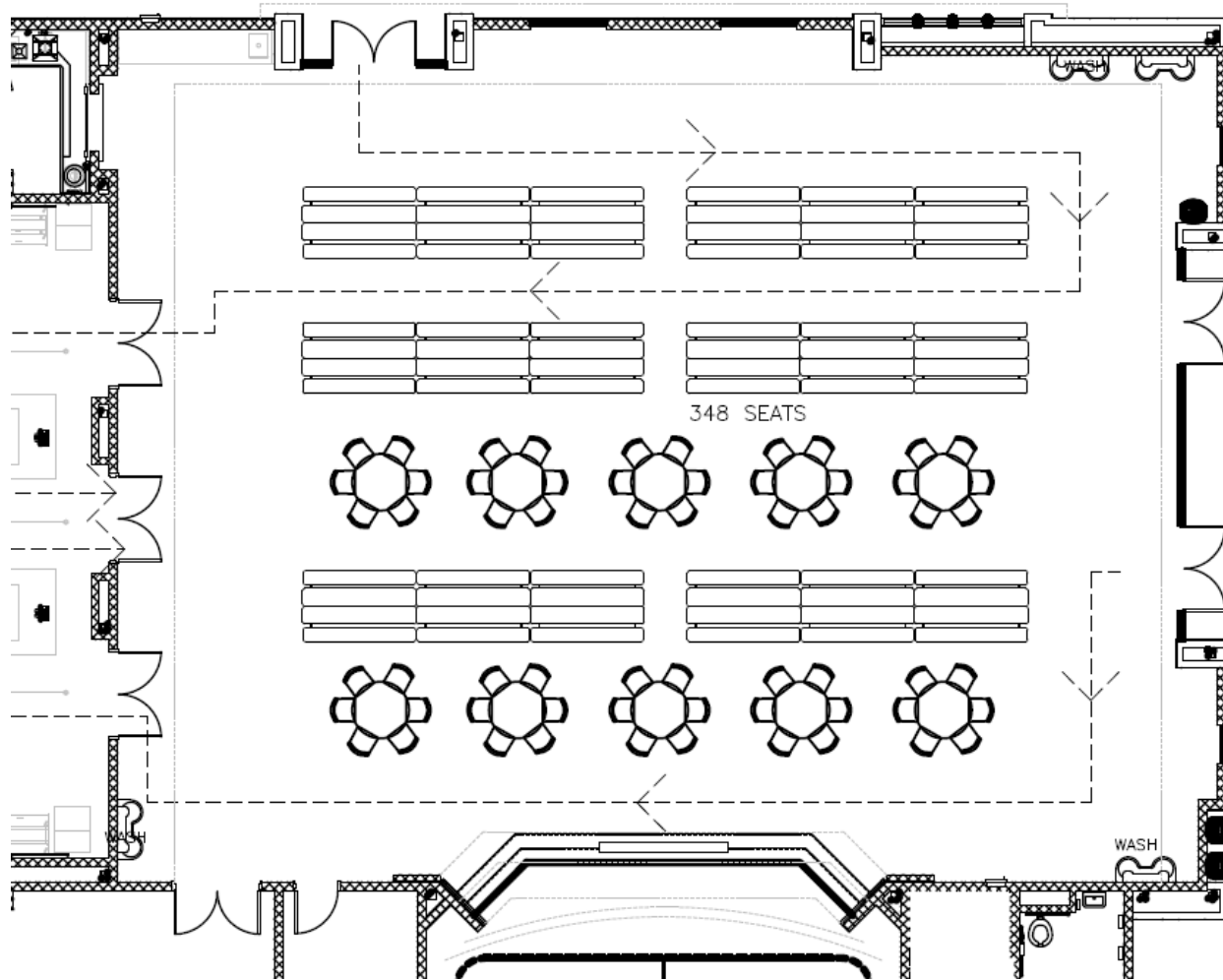


GIBRALTAR
DESIGN



NEW ELEMENTARY SCHOOL

Cafeteria, Gym & Commons



Considerations

- ❖ Round Seating: 312
- ❖ Mixed Seating: 348
- ❖ Rectangular Seating: 420
- ❖ 2 Serving Lines
- ❖ Seating Capacity for 2 Grade Levels at once
- ❖ Master Planned For Future Growth

School Facility
Improvements

**School Board
Meeting**

November 15, 2022

CREATED FOR

*Lebanon
Community
School
Corporation*

STOKES ELEMENTARY SCHOOL

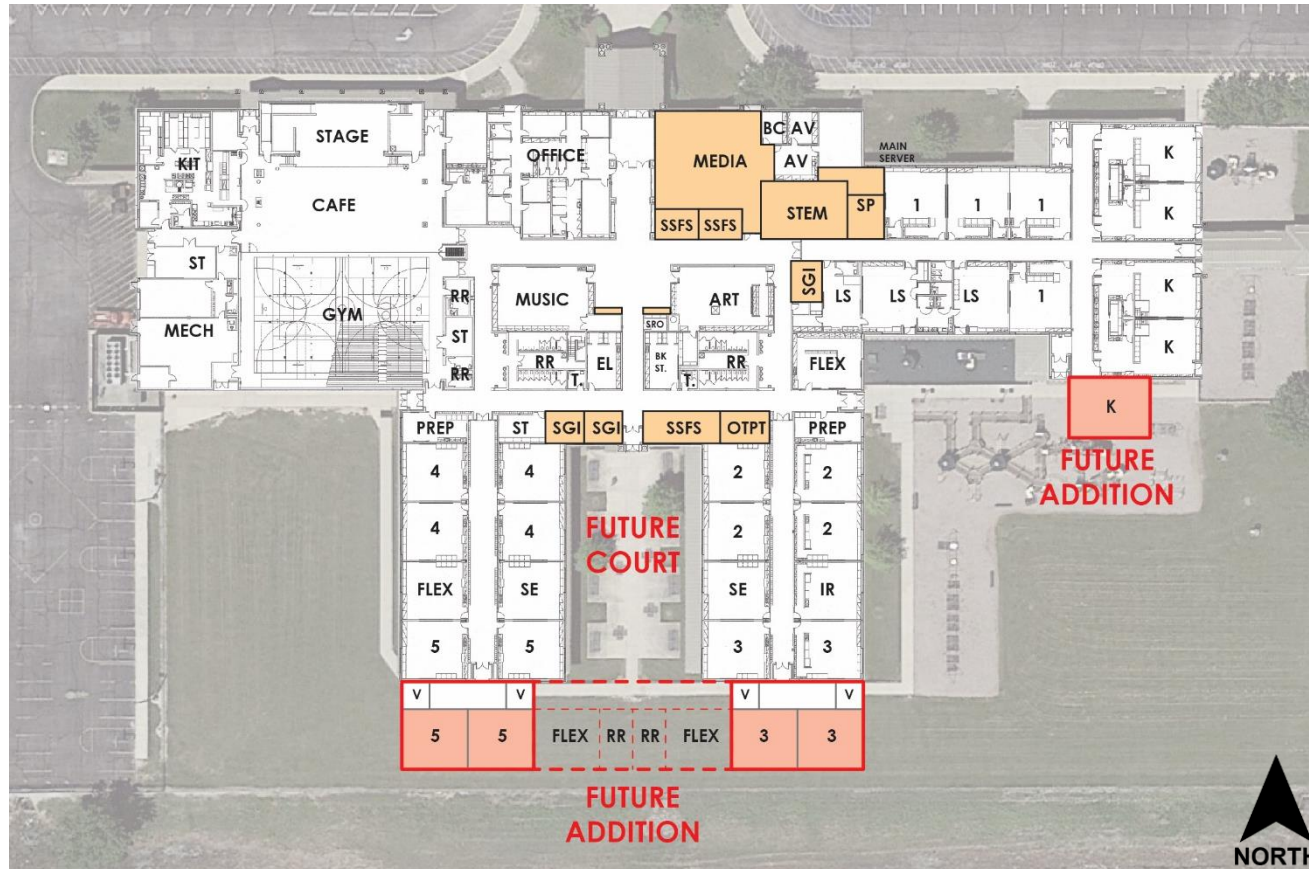


GIBRALTAR
DESIGN



STOKES ELEMENTARY SCHOOL

Building Plan Diagram



Considerations

- ❖ Added KG Capacity
- ❖ 2 Life Skills CR
- ❖ Additional FLEX Classrooms for Future Growth
- ❖ Additional Small Group Instruction and Student Support Flex Spaces
- ❖ Calming Room near Main Office
- ❖ New STEM Space

School Facility
Improvements

School Board
Meeting

November 15, 2022

CREATED FOR

Lebanon
Community
School
Corporation



GIBALTAR
DESIGN

MEYER
NAJEM

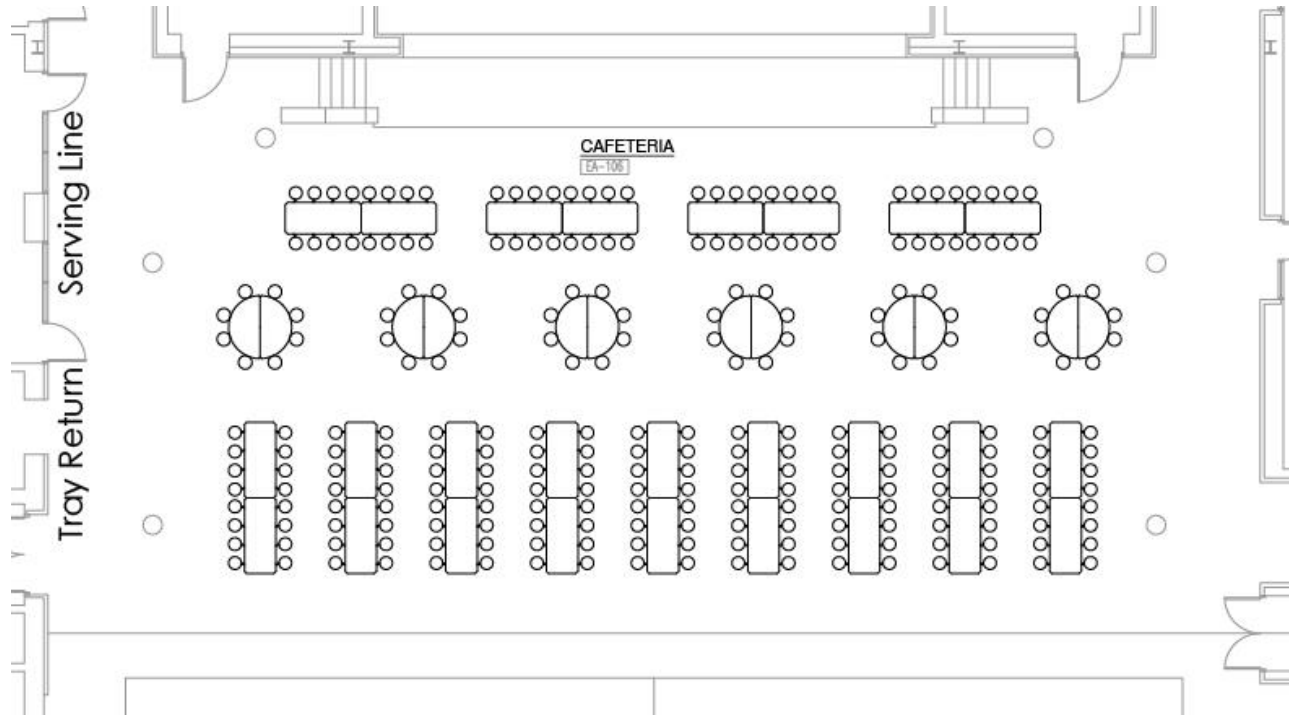


GIBRALTAR
DESIGN



STOKES ELEMENTARY SCHOOL

Cafeteria



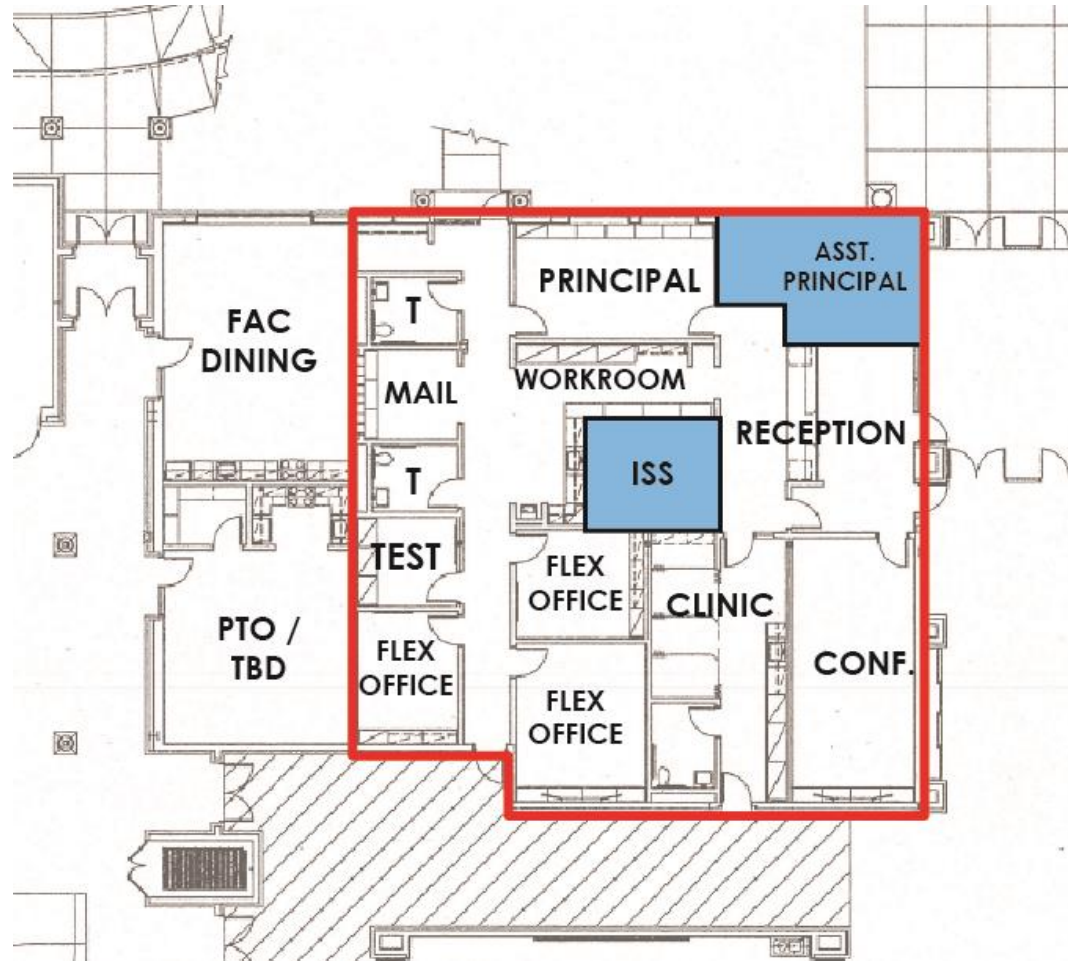
Considerations

- ❖ Round Seating: 192
- ❖ Mixed Seating: 256
- ❖ Rectangular Seating: 352
- ❖ SF 4,320



STOKES ELEMENTARY SCHOOL

Main Office Update



Considerations

- ❖ Admin SF
 - ♦ 3,700
- ❖ Reorganized Spaces for Future Growth and Student Support Programming



School Facility
Improvements

School Board
Meeting

November 15, 2022

CREATED FOR

Lebanon
Community
School
Corporation



GIBRALTAR
DESIGN

MEYER
NAJEM

School Facility
Improvements

School Board
Meeting

November 15, 2022

CREATED FOR

Lebanon
Community
School
Corporation



GIBRALTAR
DESIGN

MEYER
NAJEM



LEBANON
COMMUNITY SCHOOL CORPORATION



Most Importantly:
A school facility will
provide students an
enriching environment
for enhanced learning,
opportunity, and
achievement.



THANK YOU

CONTRIBUTORS



CREATED FOR

